



LED LIGHTING

Respect for the environment

Innovation Energy Saving



"I shall make electricity so cheap that only the rich can afford to burn candles"
[Thomas A. Edison]

MISSION

Erreti mission is to develop and diffuse LED technology in order to improve comfort and wellbeing.

*Thanks to its know-how **Erreti** is able to offer a full range of services, adding further value to what is offered to the customers. Flexibility and professionalism are the main qualities of **Erreti**. Thanks to them, the company satisfies both customized and standard requests and proposes excellent results thorough cutting-edge solutions.*

Rebellato Thomas

***Erreti** director*

EVIDENCE MAKES THE DIFFERENCE



In this installation carried out by Erreti it is possible noticing the difference between standard street lighting (on the left) and cutting-edge **LED** lighting (on the right).

The difference is so noticeable that the LED beam also lightens the area of the traditional street lamp.

LEDs are revolutionizing modern lighting both because of their low cost and the quality and quantity of lighting.

Erreti is producing more and more innovative lighting systems since they enable customers to use light better, while also saving on electricity.

Needless to say, **LEDs** last more than standard and low-consumption bulbs and are therefore advantageous for their extremely low maintenance costs.

ILLUMINAZIONE A LED

La differenza si è fatta luce...



ENERGY SAVING AND RESPECT FOR THE ENVIRONMENT IF NOT NOW, THEN WHEN?



Giovanni XXIII Square - Cornuda (TV) – Italy

Visibility



Communication



Technology

HOW TO MAKE YOUR MESSAGE BETTER AND MORE ATTRACTIVE

Scientific studies, media and experience have proven that people remember messages longer if they are conveyed in a pleasant way.

A high-visibility luminous sign, a bright advertisement, a room with particular and refined shading, an self-lightening highly-visible indicator panel... all these systems convey visual signs able to attract people's attention because of their dynamism and pleasing aspect.

The luminous dynamism of a LED screen plays a leading role in communications and is able to render the message more memorable.

LED screens catch people's attention night and day thanks to the dynamic and pleasant sensations they arise, no matter the quality and quantity of light supplied by the surroundings.



NIGHT AND DAY VISIBILITY!!!



NIGHT AND DAY VISIBILITY!!!



RT-60

Replaces traditional 150 Watt bulbs

RT series, thanks to the use of low-cost high-efficient LED technology guarantees high luminous performance as well as long life-span, while reducing maintenance and operational costs. Reliability is thus assured.

Use: for any street lighting system.

Further details and technical data can be found clicking on:

www.erretiled.com

Model	RT-60		
Light Source	1W high power LED		
LED Total Power	60W		
Lamp Total Power	70W		
Power Efficiency	85%		
LED Luminous Efficiency	≥90-100lm/w for cool white		
LED Initial Flux	5700lm(Tj=25°C)		
Lamp's Efficiency	>90%		
Average Illumination and Effective Illuminated Area	6m Height	20m×8m /	≥30LUX
	8m Height	26m×10m /	≥20LUX
	10m Height	33m×13m /	≥13LUX
	12m Height	40m×16m /	≥6LUX
Color Index (CRI)	Ra > 75		
Color Temperature (CCT)	Cool white: 4500-7000K		
	Pure white: 3500-4500K		
	Warm white: 2700-3500K		
Beam Angle	The Horizontal Axis: 120° e 140°		
	The Vertical Axis: 60° e 68°		
Light Distribution Curve (Beam Pattern)	Asymmetric (Bat Wing) / Rectangular Beam		
Input Voltage	85-264V AC or 12V / 24V DC		
Frequency Range	47-63Hz		
Power Factor (PF)	>0.9		
Total Harmonic Distortion (THD)	< 20%		
Working Humidity	10% -90% RH		
Light Body and Lampshade Material	Aluminum Alloy and PC		
Working Lifetime	> 50000hrs		
IP Rating	IP65		
Net Weight	6.9 kg		
Package Size (mm)	565×380×160 (1 PC)		

ERRETI RANGE Street lighting



RT-30

Replaces traditional 60-80 Watt bulbs



RT-60

Replaces traditional 150 Watt bulbs



RT-120

Replaces traditional 250 Watt bulbs



RT-180

Replaces traditional 400 Watt bulbs



RT-240

Replaces traditional 500 Watt bulbs

ERRETI "MINI" RANGE



RT-25M

Replaces traditional 70 Watt bulbs



RT-30M

Replaces traditional 75-100 Watt bulbs



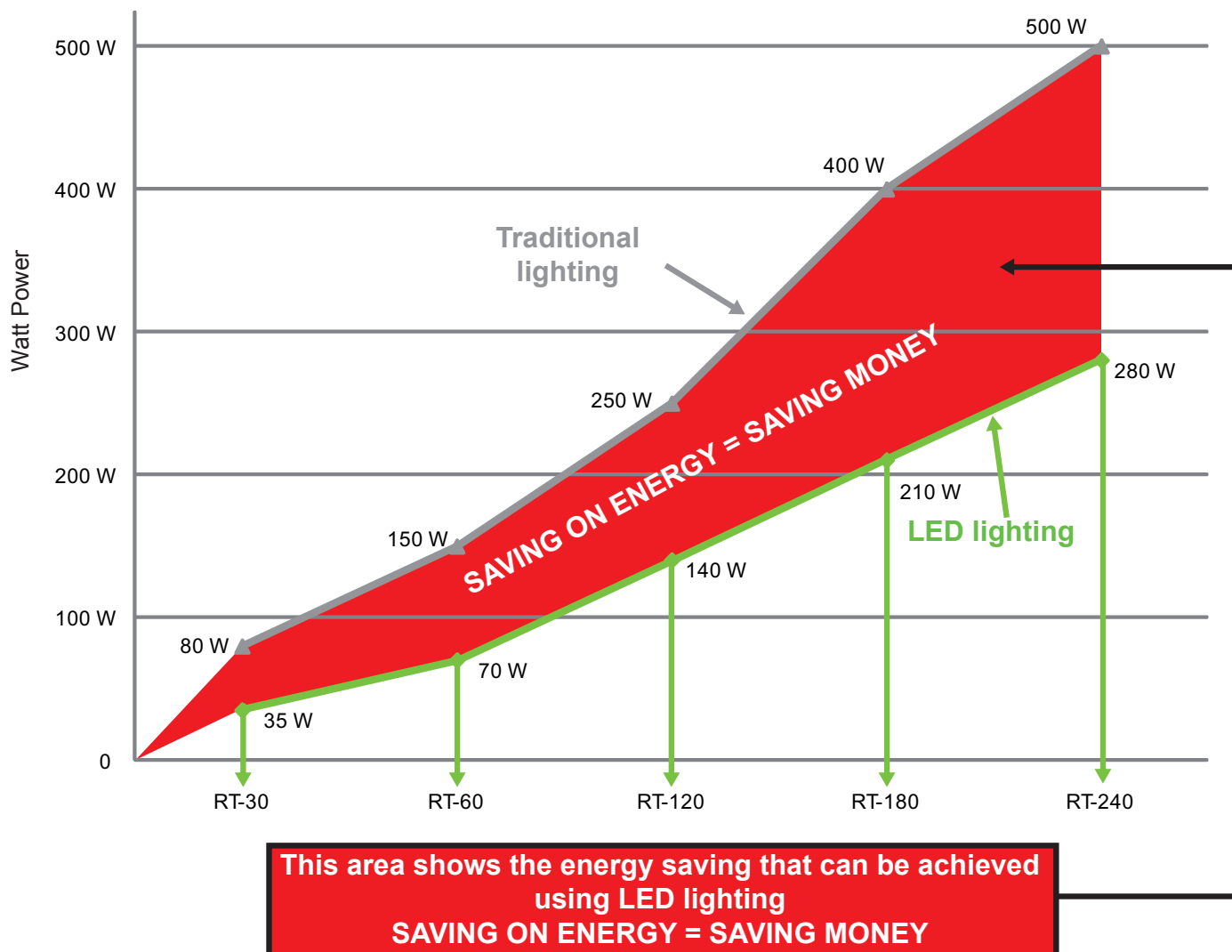
RT-40M

Replaces traditional 100 Watt bulbs

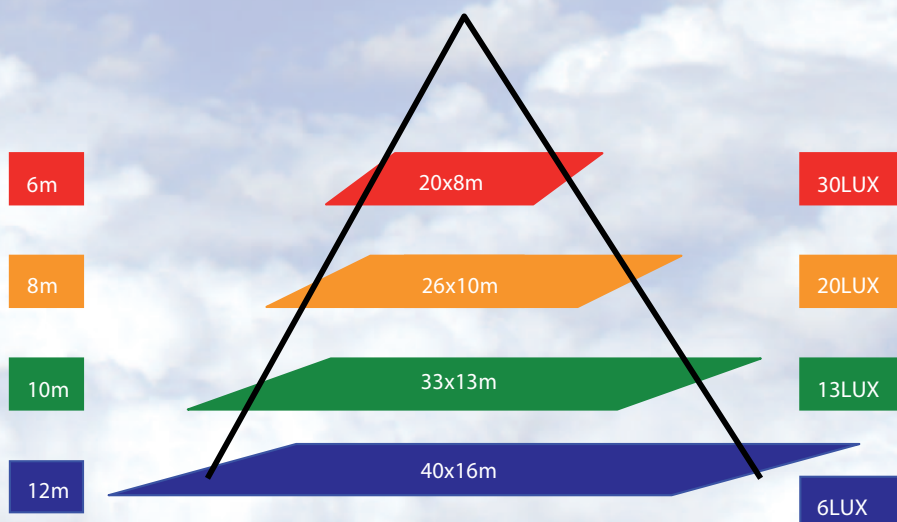
Further details and technical data can be found clicking on **www.erretiled.com**

ERRETI

Designed for your energy saving



Light diffusion at different heights

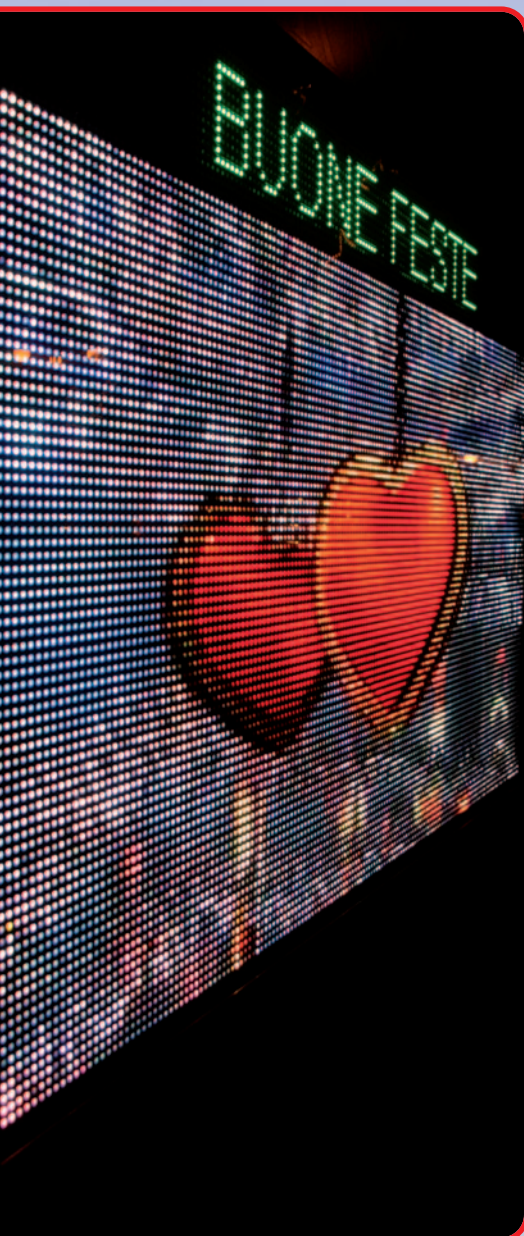


The chart shows the saving using **RT-60**, the model suitable for replacing a traditional 150 Watt bulb.

This chart shows the process of light diffusion at different heights.

This graph illustrates at which height LED lamps have to be installed and how to choose the right model to get the desired lightening effect (LUX).

According to the installation height and to the LED model suitable for your lighting needs, the chart also explains the distance between lamps that should be respected.



ERRETI and indoor/outdoor LED advertising screens

Replaces any traditional advertising panel

A LED screen does not fear comparison with advertisement posters since it is visible night and day and does not remain in the dark when there is little light. Moreover, it is a clean way to advertise since no glue is needed and the space can be even more efficiently used if different messages are delivered within different time-ranges. So high visibility and efficiency are two of the main advantages of LED monitors.

Flexibility thanks to modules

Thanks to modules, ERRETI screens can be provided in different sizes, according to space and visibility requirements and to the customer's needs.

Use: any advertising and marketing communication as well as local notices and warnings can be seen all day long, both night and day.

Personalized and direct messages, visible NIGHT AND DAY!!!

TECHNICAL FEATURES OF RTM SCREENS

Pixel Configuration	1R1G1B	
Red wavelength	nm	625 ± 2
Green wavelength	nm	525 ± 2
Blu wavelength	nm	470 ± 2
Colors	16777216	
Horizontal viewing angle	140°	
Gray scale	nr	16
Color temperature	°k	6500
Control method	Synchronization & Asynchronization	
Frame frequency	Hz	60
Working voltage	V - AC	220/110 ±10%
Working temperature	°C	-20 ~ 80
MTBF	hours	> 10000
Life span	hours	> 100.000



Model		RTM P4 I	RTM P6 I	RTM P7,625 I	RTM P8 I	RTM P10 I	RTM P16 I	RTM P8 E	RTM P10 E	RTM P16 E
Use		INDOOR	INDOOR	INDOOR	INDOOR	INDOOR	INDOOR	OUTDOOR	OUTDOOR	OUTDOOR
Pixel pitch	mm	4	6	7,625	8	10	16	8	10	16
Size of unit board	mm	128 X 128	96 X 192	122 X 244	256 X 256 256 X 128	160 X 320	96 X 192	128 X 256	160 X 160 160 X 320	128 X 256
Resolution of unit board		32 X 32	16 X 32	16 X 32	32 X 32 32 X 16	16 X 32	8 X 16	16 X 32	16 X 32	8 X 16
Density of pixel	pixel/m²	62500	27777	17222	15625	10000	6944	15625	10000	3906
Best viewing distance	m	≥ 4	≥ 6	≥ 8	≥ 10	≥ 10	≥ 12	≥ 10	≥ 10	≥ 14
Maximum power consumption	W/m²	≤ 600	600-1000	600-1000	600-1000	500-1000	< 500	< 1100	< 1100	< 1100
Brightness	cd/m²	1800-2200	2200-3500	1800-5500	1500-5000	1400-9500	800	7500	9500	8600
Driving method scanning		1/16 - 1/8	1/16 - 1/8	1/8 - 1/4	1/4	1/8 - 1/4	1/8 - 1/4	1/16	1/8 - 1/4	1/16 - 1/8
Refresh frequency	Hz	350	350	350	350	350	350	450	450	450
IP grade		IP20 - IP65	IP20 - IP45	IP20 - IP45	IP20 - IP45	IP20 - IP65	IP20 - IP65	IP67	IP67	IP67

ERRETI and environments lighting products.

RT-FLUORESCENT



RT-PANEL

RT-PANEL

RT-TRACK



RT-CEILING



RT-STRIP

ERRETI and decorative environments lighting products.

RT-DECOR1



RT-LIGHTBAR



RT-DECOR2



RT-ICE



RT-LIGHTBAR creates vivid light multicolour effects suitable for wall and screen projections.

RT-DECOR1 and **RT-DECOR2** Wallwasher gives you the opportunity to use orientable lighting effects that create a special atmosphere for different kind of projections.

RT-ICE 7 colors with its translucent LEDs gives you the possibility to offer to your guests chilled-wine and many other drinks in a charming colour-changing ice-bucket.

The electrical line which also offers Internet...

This system enables you to use the existing electric system to have access to Internet and video data.

Each street lamp has an electronic appliance that makes it possible to check any malfunctions; thanks to a managing software monitoring becomes easier and more accurate.

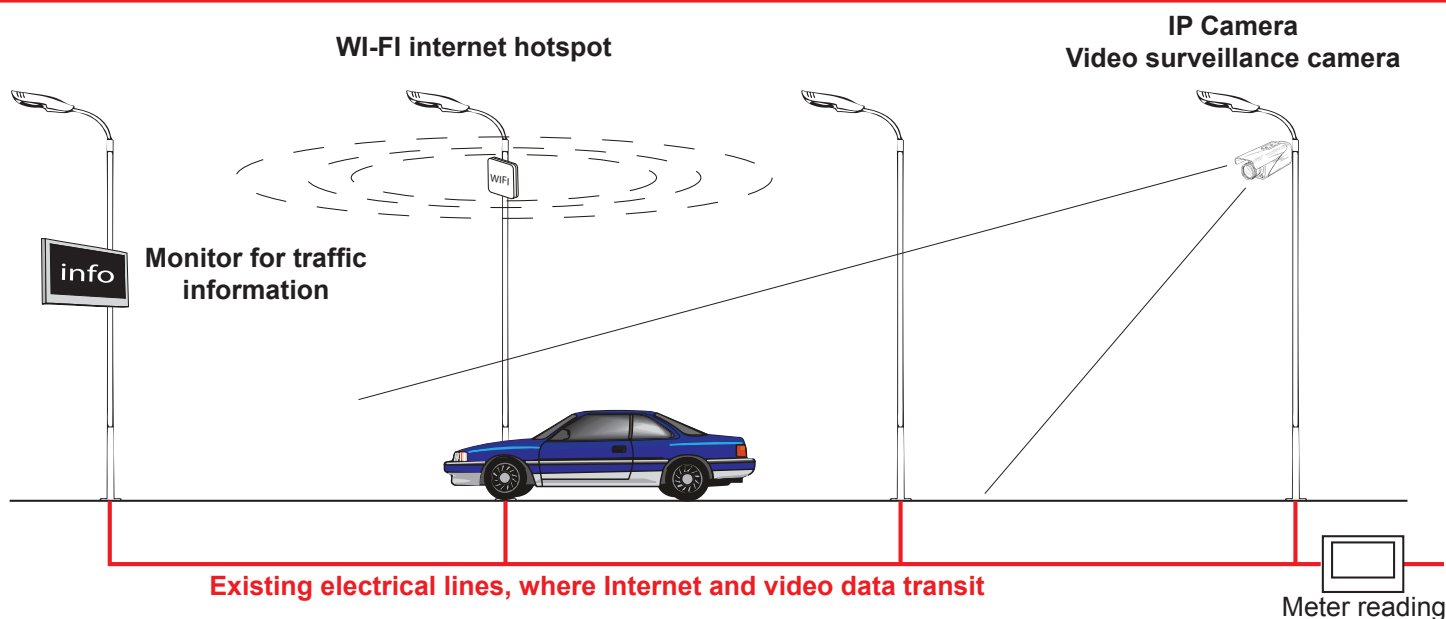
With specific appliances connected to a PC or using **Wi-Fi**, it is possible to add Internet to the existing electrical system.

In this way it will be possible to **extend the Internet to those areas which are not served by ADSL** and therefore have access to the Internet where you thought it couldn't be possible.

How does all this work?

As you can see in the scheme below, it is also possible to use video surveillance systems fixed on the street lamps and install monitors for obtaining traffic information.

All this simply using the same electrical line used for the data transfer.



ADVANTAGES

- Up to 45% energy saving
- Quick return on investment
- No costs for failures and reduced maintenance time
- No need for lighting during the day to search for failures
- Programmed on and off switch for each lamp
- No costs for the creation of new infrastructures
- Improved quality of the lighting service
- High savings while respecting the environment: less materials used and more services as required by the laws and regulations in force



www.erretiled.com

ERRETI di Rebellato Thomas

Via Ospedale 85 CAP. 31044

Montebelluna (TV)

Tel. +39 0423/6004002

Cell. +39 349/8360582

In order to improve their products and services, ERRETI has the right to alter any features and information contained in this leaflet even without notice.

ERRETI declines any responsibility for damages to people and objects. ERRETI declines any responsibility should this leaflet be found in places which are not assigned for distribution.